





## DANAO LIVING IS A SPIRITED AMERICAN LIFESTYLE BRAND OFFERING EXCLUSIVE FURNISHINGS FOR THE OUTDOORS.

The artistry and craftsmanship of our collections is inspired by the American landscape and fueled by personal stories of travel, adventure, innovation and discovery. While the style and comfort of our designs has made Danao Living an internationally acclaimed brand, our way of doing business remains rooted in American ideals.

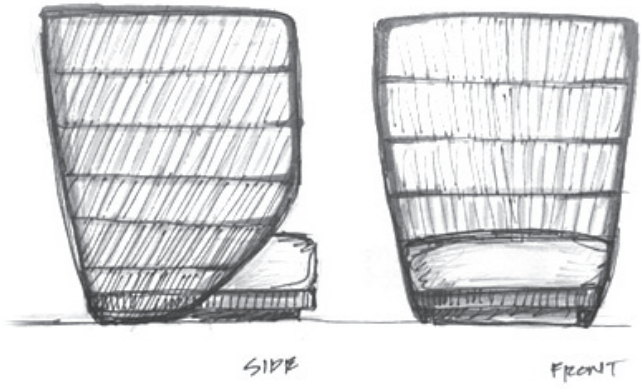
At Danao Living, we make connecting with nature possible by creating timeless environments where people can savor each precious moment. From our beginnings in 2000, our mission has been to make outdoor furniture as beautiful, flawlessly designed and enduring as nature itself.

The passion that drives us each day is the creation of serene and luxurious exterior living spaces that encourage those around the world to *Embrace the Outdoors*.

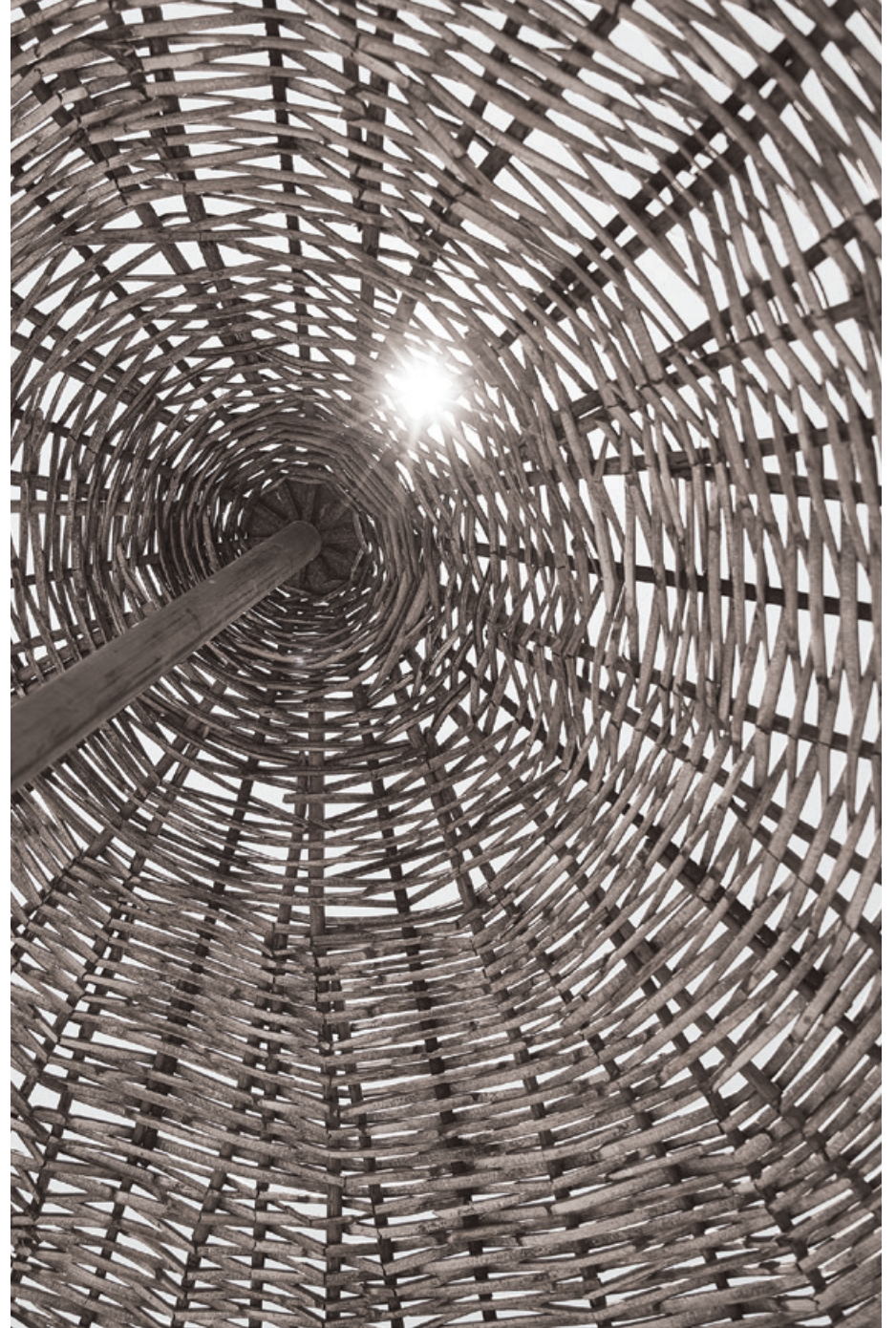
Larry Serge and Keshava Aswath







THE CUFF COLLECTION DESIGNED BY ANN VERING











THE MOZIA COLLECTION DESIGNED BY GORDON GUILLAUMIER





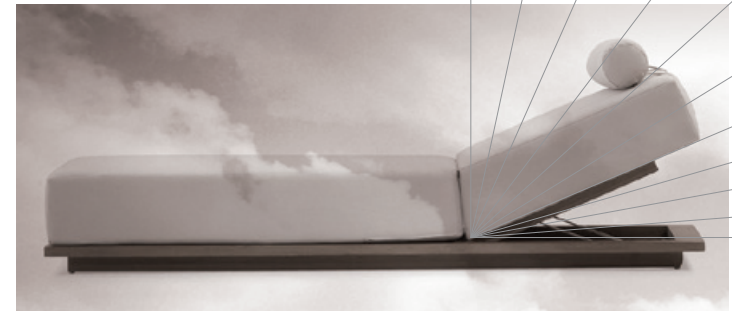
THE TOPANGA COLLECTION DESIGNED BY MONICA ARMANI







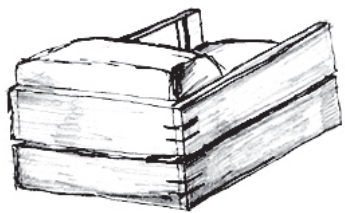
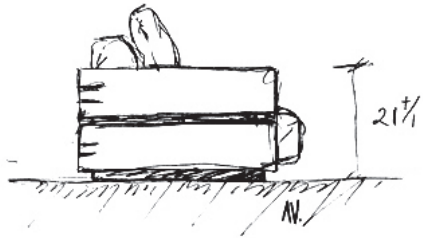
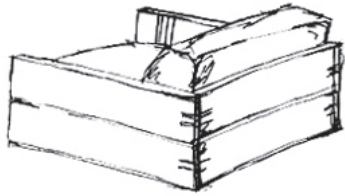
DESIGNING FURNITURE  
THAT BLENDS SEAMLESSLY  
INTO THE NATURAL  
SURROUNDINGS



THE S2 COLLECTION DESIGNED BY ANN VERING





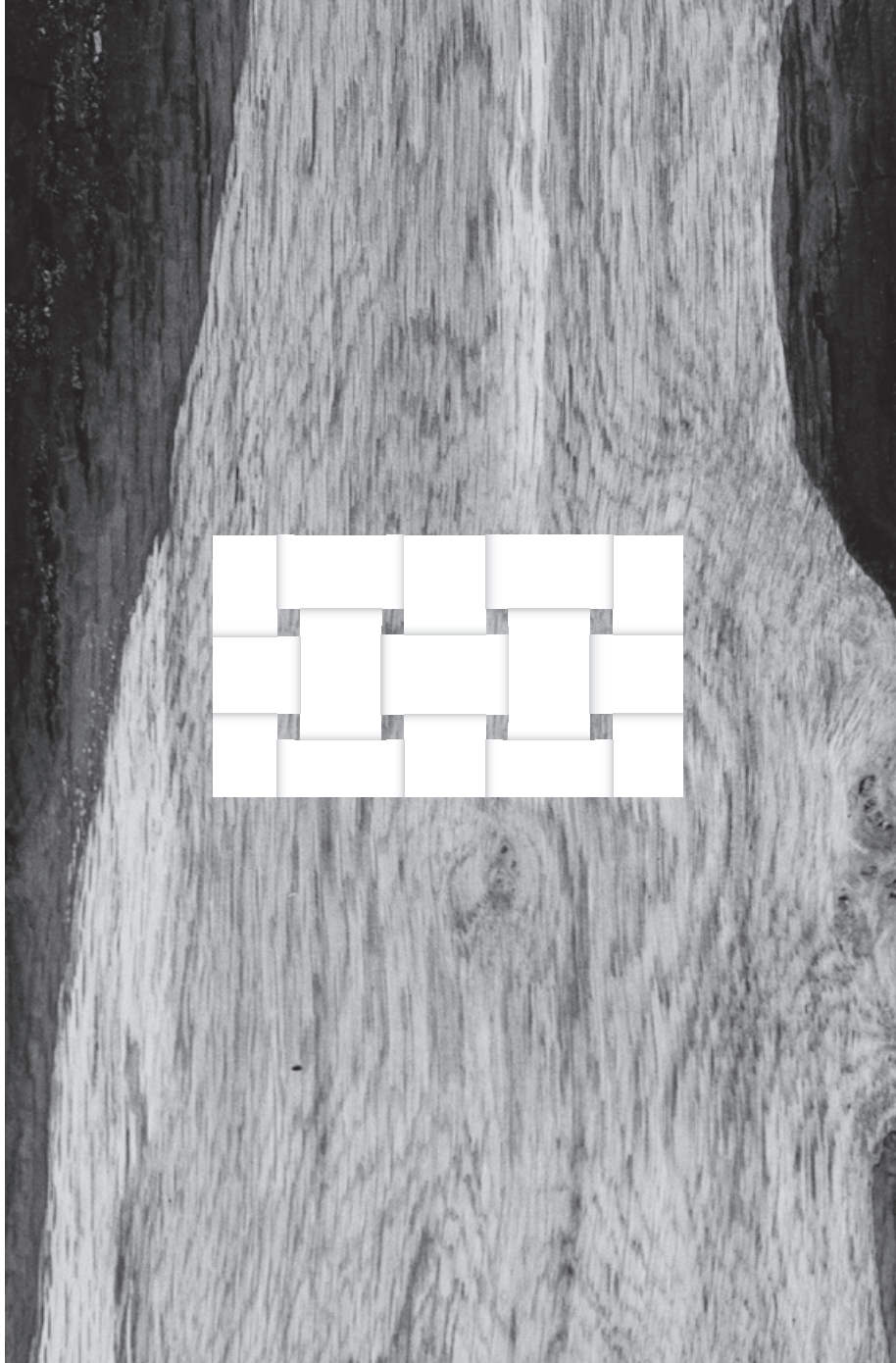


TURNING  
ABSTRACT  
IDEAS  
INTO  
WOOD,  
METAL  
AND  
TEXTURED  
REALITY

THE MCQUEEN COLLECTION DESIGNED BY ANN VERING







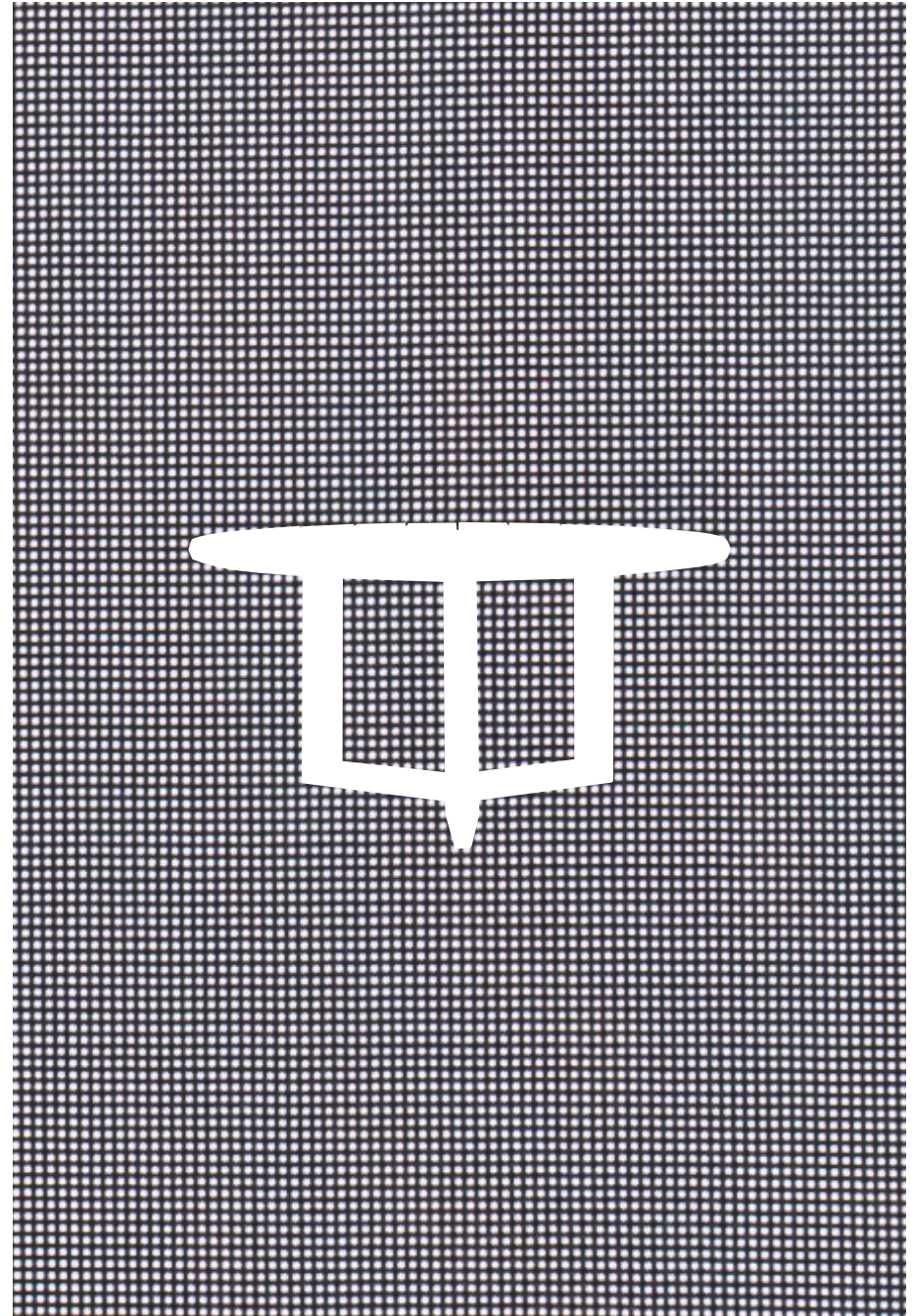
THE TRESS COLLECTION DESIGNED BY TOAN NGUYEN





CREATING SERENE  
AND LUXURIOUS  
EXTERIOR LIVING  
SPACES IS THE  
PASSION THAT  
DRIVES US

THE CANYON COLLECTION DESIGNED BY MARIO RUIZ

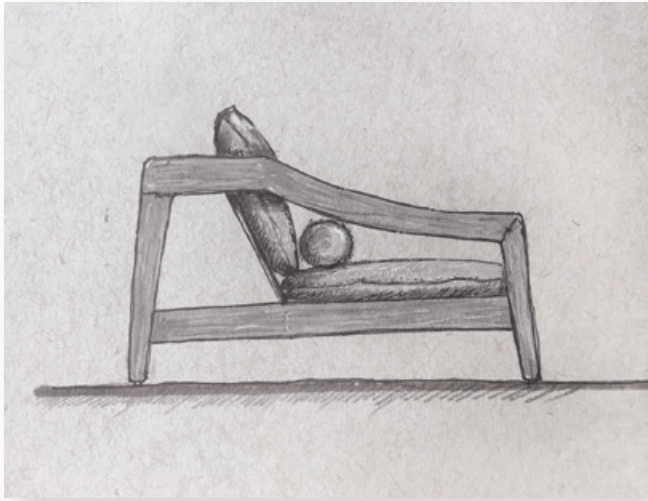










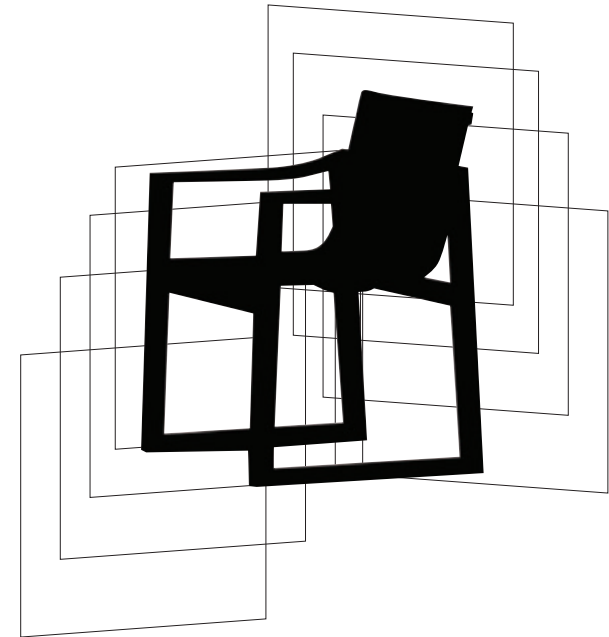


THE REDDINGTON COLLECTION DESIGNED BY ANN VERING





WE BELIEVE  
CONNECTING WITH  
NATURE ENRICHES  
OUR MINDS  
AND FILLS OUR  
HEARTS



THE JACKSON COLLECTION DESIGNED BY MARIO RUIZ





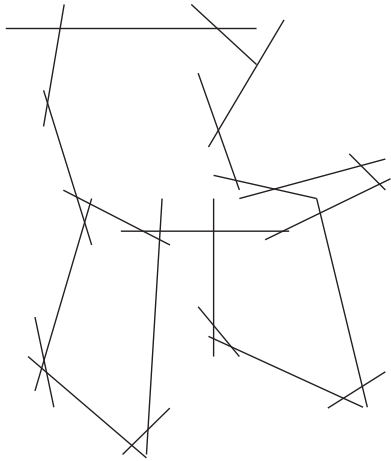


THE DESERT COLLECTION DESIGNED BY MARMOL RADZINER









JAGGER CHAIR



DESIGNED BY ANN VERING



## DESIGNERS



### MONICA ARMANI

Italian architect and designer, Monica Armani began her professional career working with her father, rationalist architect Marcello Armani. Rigorous design and engineering innovation mixed with a female and elegant touch give life to a unique and recognizable style, contemporary and timeless at the same time.



### ARTHUR CASAS

The modern and contemporary aspects of design influences Brazilian architect, Arthur Casas, as he uses innovative techniques in the execution of his projects. His expertise extends beyond residential projects into commercial, institutional and now to furniture design. Arthur Casas is recognized as one of the top architects in the world.



### COLIN NOURIE

Colin Nourie earned a bachelor of science in industrial design from Ohio State University. After more than a decade of independent design consulting, he founded the design firm Collective Ten in 2013. Today, he serves as chief designer for Collective Ten continuing to partner with international clientele from their Cincinnati studio.



### MARMOL RADZINER

Marmol Radziner was founded in 1989 with a shared vision in mind – to unite building, landscape, interiors, and furnishings with a single modern viewpoint. Today, the architect-led design-build firm brings together architects, interior designers, landscape architects, construction crews, cabinet makers, metal fabricators, and carpenters all under one practice.



Photo Credit: Andrea Basile

### GORDON GUILLAUMIER

Gordon Guillaumier graduated in industrial design at the IED, Milan and later at the Domus Academy, Milan for his masters in industrial design. In 2002 he set up his own design studio in Milan, working on product, interior and furniture design. His work is regularly featured in the international design press and has been recognized with numerous awards.



### TOAN NGUYEN

Toan Nguyen graduated in Industrial Design at ENSCI – Les Ateliers. After various experiences in Paris and Barcelona, notably with Alberto Lievore, he moved to Milan pursuing his career with Antonio Citterio, where he became head of design and design partner. He founded his own design studio in 2008 with a resolutely multidisciplinary approach, focused on design from product development to art direction.



### MARIO RUIZ

Spanish designer Mario Ruiz graduated in Industrial Design at Barcelona's prestigious Design School, Elisava. He started his independent professional career in 1995 by opening his own studio in Barcelona. In 2016, he received the prestigious National Design Prize, given by the King of Spain, Felipe VI and the Ministry of Economy.



### ANN VERING

With a hybrid portfolio of hotel design, furniture design and restaurant design, Ann uses a holistic and efficient approach to handcraft projects from concept to completion. With an education in architectural engineering coupled with an artistic background, she brings a unique understanding to each project.

IT IS OUR MISSION TO DESIGN  
BEAUTIFUL AND COMFORTABLE  
FURNITURE  
THAT HELPS PEOPLE  
ENJOY AND EMBRACE THE OUTDOORS.

THIS SIMPLE PHILOSOPHY HAS LED

**DANAO LIVING**

TO BECOME A LEADING PARTNER  
TO THE GLOBAL HOSPITALITY  
AND RESIDENTIAL MARKETS.



SOFA



LOUNGE CHAIR



COFFEE TABLE



SIDE TABLE



CHAISE



DINING ARM CHAIR



DINING CHAIR



DINING TABLE (RECTANGULAR)



DINING TABLE (ROUND)



The sleek lines and sculptural proportions of the Canyon Collection by Spain's Mario Ruiz are a true measure of the renowned designer's attention to detail. Precisely crafted and constructed, Canyon will surely stand the test of time, climate and beauty. *Only available outside the US.*



CANYON COLLECTION

DESIGNED BY MARIO RUIZ



SOFA



LOUNGE CHAIR



COFFEE TABLE



SIDE TABLE



CHAISE



DINING ARM CHAIR



DINING CHAIR



DINING TABLE (RECTANGULAR)



DINING TABLE (ROUND)

CUFF COLLECTION

DESIGNED BY ANN VERING



SOFA



LOUNGE CHAIR



HIGH BACK CHAIR



COFFEE TABLE



SIDE TABLE



CHAISE



DINING ARM CHAIR



DINING TABLE

The stately Canyon Collection by award-winning Spanish designer Mario Ruiz is a testament to his belief that beauty and function are always inseparable. Striking in both scale and form, and superbly crafted of enduring teak, Canyon performs as magnificently as it looks. *Only available outside the US.*

Inspired by the curved wrist bangles worn by indigenous cultures, the Cuff Collection brings an elevated aesthetic to the outdoors. A powder-coated aluminum frame and custom weave, allow the elements of light and air to flow through. Seat platforms are slightly elevated to lend a weightless feel; as if taking flight.

DESERT COLLECTION

DESIGNED BY MARMOL RADZINER



SOFA



LOUNGE CHAIR



COFFEE TABLE



SIDE TABLE



CHAISE



DINING ARM CHAIR



DINING TABLE

JACKSON COLLECTION

DESIGNED BY MARIO RUIZ



SOFA



LOUNGE CHAIR



COFFEE TABLE



CHAISE



DINING ARM CHAIR



DINING CHAIR



DINING TABLE

The Desert Collection by architect/designers Marmol Radziner powerfully connects elements of quality, durability and function with the rugged beauty of a desert landscape. Featuring rigorous, clean lines and low profiles, the sleek collection reflects simple geometries, with an emphasis on natural materials and fine craftsmanship.

As expected of a designer awarded Spain's prestigious National Prize, the Jackson Collection by Mario Ruiz is stunning. Featuring minimalistic lines and measured proportions, harmonious shades and discreet shapes, refined materials and distinctive details, his furniture designs come together to offer a unique experience for contemporary living. *Only available outside the US.*



MCQUEEN COLLECTION

DESIGNED BY ANN VERING



SOFA



SECTIONAL



LOUNGE CHAIR



COFFEE TABLE



SIDE TABLE



CHAISE



DINING TABLE (ROUND)



DINING TABLE (RECTANGULAR)

The McQueen Collection exemplifies how a concept can be translated in a personal way to create something new and extraordinary. Inspired by a strikingly elegant jewelry box found in Asia, Ann Vering made the collection's cushions luxurious and wooden joint supports visible. Detailing is inspired by the stripes on a vintage race car.

MOZIA COLLECTION

DESIGNED BY GORDON GUILLAUMIER



2 SEAT SOFA



SOFA



SOFA



LOUNGE CHAIR



COFFEE TABLE



CHAISE



DINING CHAIR



DINING ARM CHAIR



BAR STOOL



DINING TABLE (RECTANGULAR)



DINING TABLE (SQUARE)

Mozia by Gordon Guillaumier seemingly floats like the Sicilian island for which the collection is named, due to its unique premium teak cross base that creates a distinctive lightness. Sleek linear custom cushioning sits on a solid wooden frame with fabric belt supports, imparting a fresh Mediterranean edge to the design.

TOPANGA COLLECTION

DESIGNED BY MONICA ARMANI



SOFA



LOUNGE CHAIR



POOL BED



COFFEE TABLE (RECTANGULAR)



COFFEE TABLE (SQUARE)



SIDE TABLE LOW



SIDE TABLE HIGH



CHAISE



DINING ARM CHAIR



DINING TABLE (ROUND)



DINING TABLE (SQUARE)

Designer Monica Armani mixes the masculine and feminine with curves and angles that create deeply pleasing visual rhythms in this collection. =Topanga has a bohemian vibe of comfort and style inspired by its California roots. Made of premium grade teak with custom molded cushions.

TRESS COLLECTION

DESIGNED BY TOAN NGUYEN



SOFA



LOUNGE CHAIR



SIDE TABLE



CHAISE



DINING ARM CHAIR



DINING CHAIR



DINING TABLE

The Tress collection, designed by award winning designer Toan Nguyen, is distinguished by it's unique basket weave, simple lines and calculated proportions. The result is a collection with the look of sophisticated and discrete luxury.



REDDINGTON COLLECTION

DESIGNED BY ANN VERING



SOFA



LOUNGE CHAIR



COFFEE TABLE



SIDE TABLE



CHAISE



DINING ARM CHAIR



DINING TABLE

S2 COLLECTION

DESIGNED BY ANN VERING



SOFA



LOUNGE CHAIR



COFFEE TABLE



SIDE TABLE



OTTOMAN



CHAISE



DINING CHAIR



DINING TABLE

Reddington is an elegant, captivating design that can transform any outdoor living space. Balancing the durability of a premium grade teak frame with Ann Vering's distinctive designer details, Reddington calls to mind old-growth forests and sparkling ocean views along California's Pacific Coast Highway.

The high style and sophistication of S2 suggest a distinctive lifestyle. Sparked by modern architectural elements that Ann Vering originally conceived for a glass and teak hotel facade, the main design details of the Collection are two elements that rise up and divide out, connected solely by a stainless steel rod.

# MATERIALS

## TEAK FINISHES

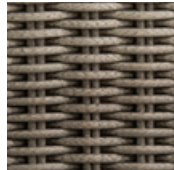


NATURAL

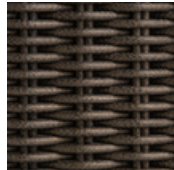


DARK

## ALL WEATHER WEAVE

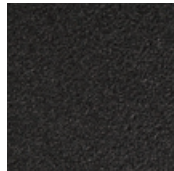


LIGHT GREY



DARK AMAZON

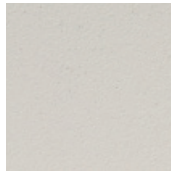
## ALUMINUM FINISHES



SPACE GREY

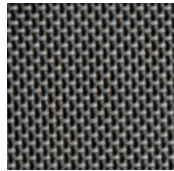


MASCADE

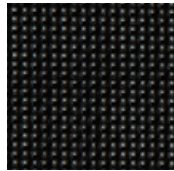


WHITE

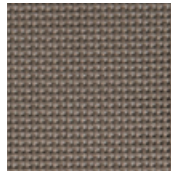
## BATYLINE



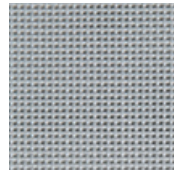
SILVER



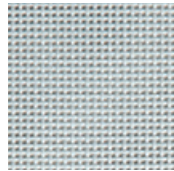
BLACK



TAUPE



GREY



WHITE

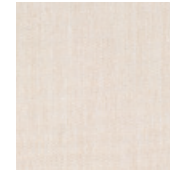
## SUNBRELLA FABRICS



WHITE



NATURAL



VELLUM



CANVAS



BEIGE



FLAX



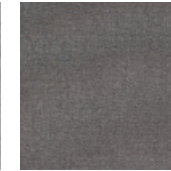
TAUPE



DUSK



GRANITE



CHARCOAL



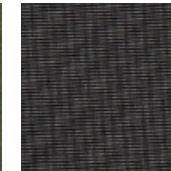
AIR BLUE



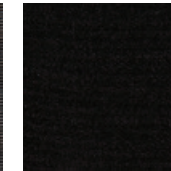
REGATTA



FERN



COAL



BLACK





